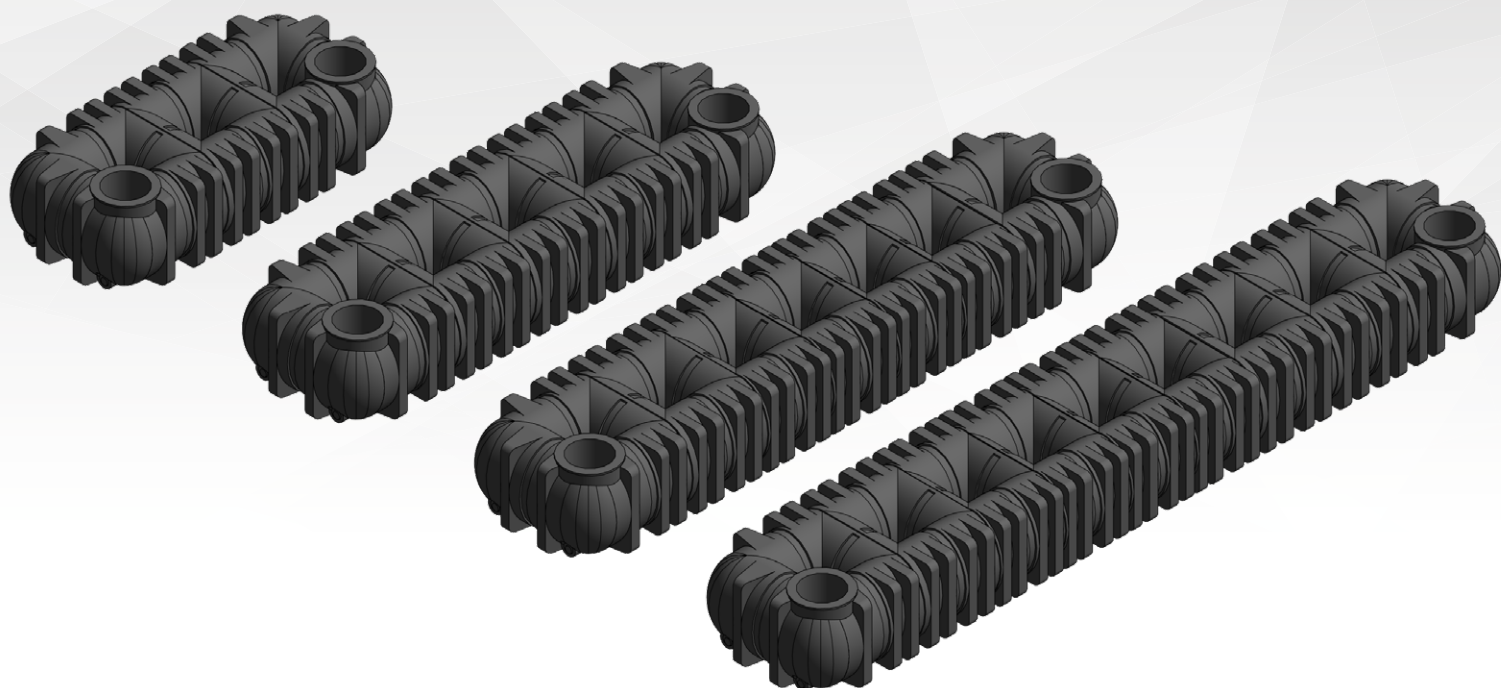




Revit Families

MANUAL HANDLING
FLAT TANK PLATIN XL-XXL
+ ACCESSORIES



GENERAL

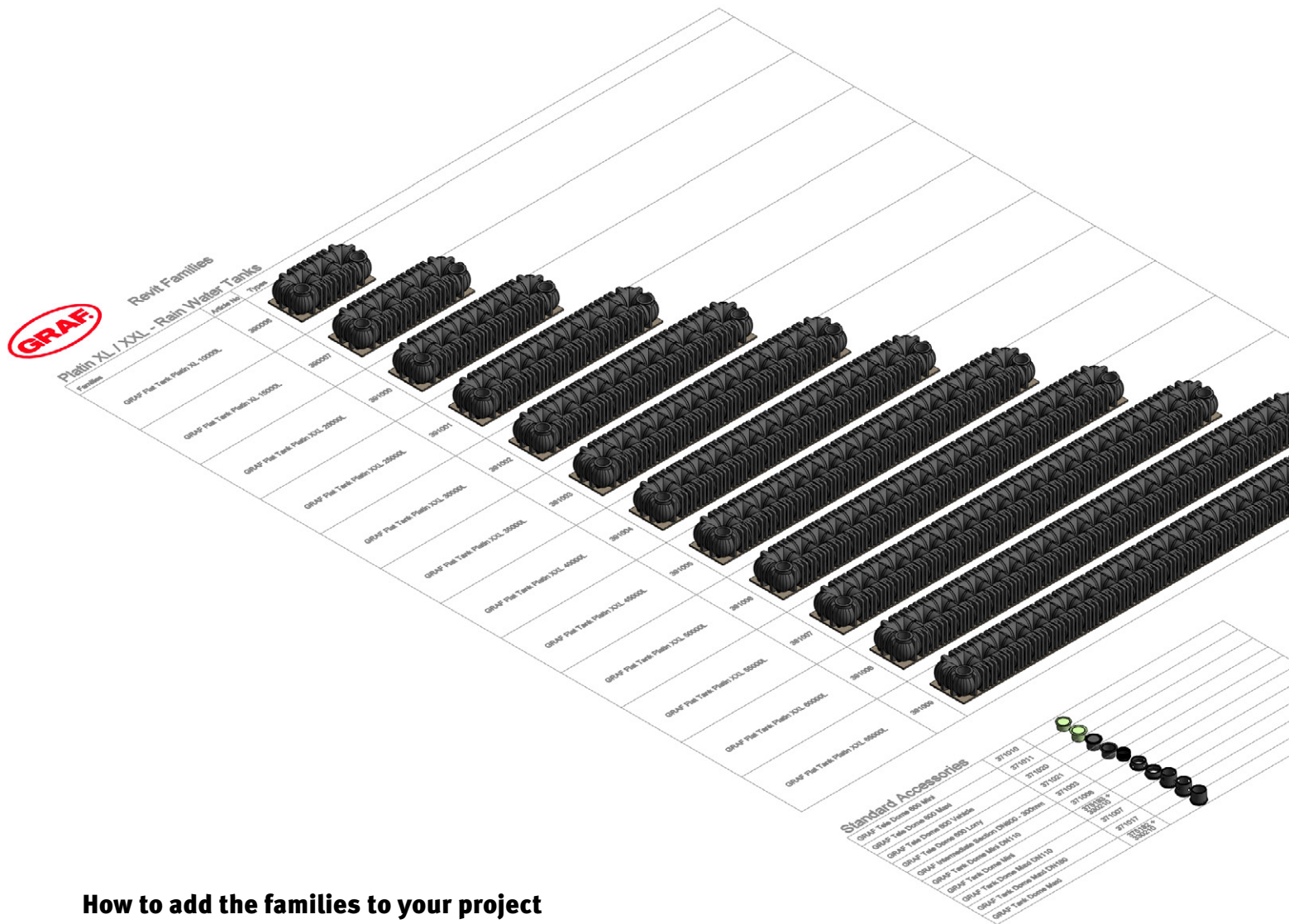
REVIT Flat Tank Platin XL – XXL + Accessories

Revit Version

The GRAF Revit Families are created in the english version of Revit 2018.

Revit Project

The Revit project **GRAF_Flat_Tank_Platin_XL-XXL+_standard_Accessories.rvt** contains all tank and standard accessories families of the Carat series. The families are created on the Revit category Specialty Equipment.



How to add the families to your project

1. Open your Revit project.
2. Open the **GRAF_Flat_Tank_Platin_XL-XXL+_standard_Accessories.rvt**
3. In this project, select a family.
4. In the Modify menu run Edit Family. This opens the Family Editor.
5. From here, run Load into Project (or Load into Project and Close) and select your project.
The family is available now in the project browser of your project under Families > Specialty Equipment.
The family types can be dragged into your drawing area.
6. You can close the family you have opened. You do not need to save it, as all families and types are still available in the **GRAF_Flat_Tank_Platin_XL-XXL+_standard_Accessories.rvt**

*Alternatively, use Insert > Load Family to load the downloaded single families directly in your project.
In this case, you do not need to open the overview project.*

PROPERTIES

REVIT Flat Tank Platin XL – XXL + Accessories

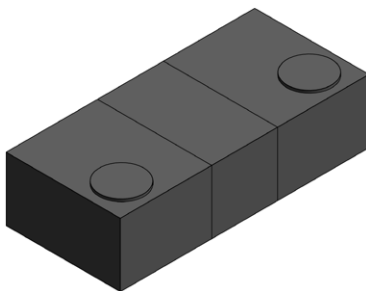


Correct planning

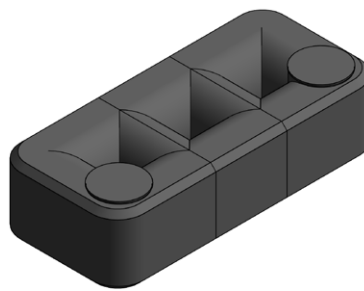
For correct planning, the information in the product-specific installation instructions must be observed.

Detail Levels

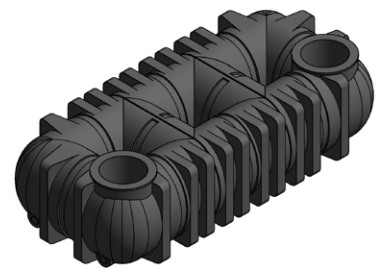
The GRAF families support the Revit detail levels Coarse, Medium and Fine.



coarse



medium

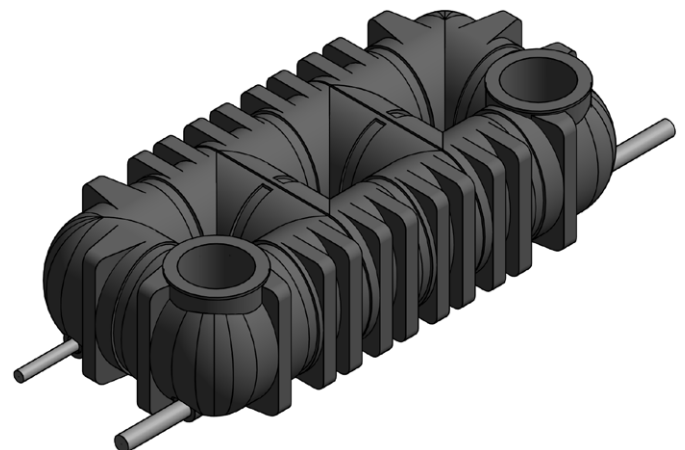
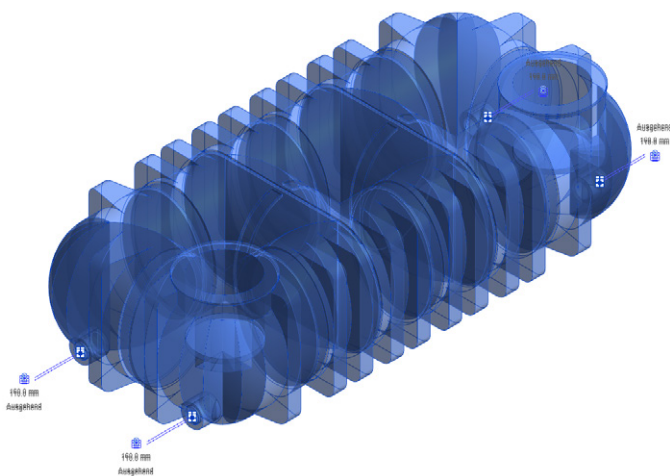


fine

Connectors

Piping systems can be designed using the connectors on the tanks and accessories.

Flat Tank Platin XL – XXL



PROPERTIES

REVIT Flat Tank Platin XL – XXL + Accessories

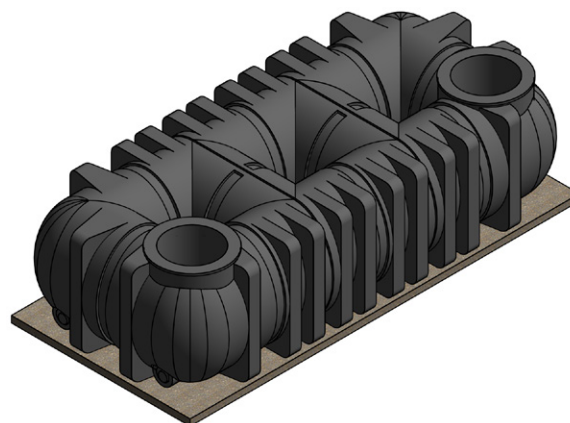
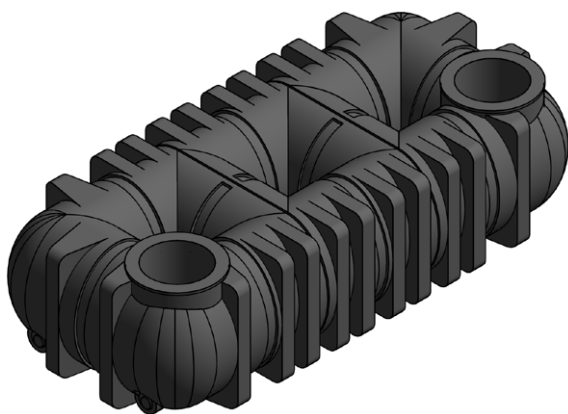
Base of the families

The base points in the families are in x/y-direction the center, in z-direction on the bottom edge for the tanks, for accessories based on the usage of the families.



Show Gravel

Defines the visibility of the gravel layer below the tank. This is displayed with 80 mm below the base-point of the model.



TYPE PROPERTIES

REVIT Flat Tank Platin XL – XXL + Accessories



The Type Properties contain Meta data like article number or hyperlinks to technical information. The material parameter is already set with predefined GRAF materials.

Typeneigenschaften

×

Familie:

GRAF Flat Tank Platin XL 10000L

▼

Typ:

Platin XL 10000L

▼

Laden...

Duplizieren...

Umbenennen...

Typenparameter

Parameter	Wert	=	^
Konstruktion			
Excavation Width	2450.0		
Excavation Length	5100.0		
Excavation Height	1635.0		
Distance from Solid Constructions	1000.0		
Materialien und Oberflächen			
Material	Graf_PE		
Abmessungen			
Width	2250.0		
Length	4900.0		
Height	1250.0		
HLS			
Connection Surfaces	4x DN110 / 4x DN160 / 4x DN200		
ID-Daten			
Typenbild			
Bauelement			
Beschreibung	Rain Water Tank		
Material Description	PE		
Modell	Flat Tank Platin XL 10000L		
Article Number	390006		
Volume	10000.00 L		

GRAF Specialty Equipment Schedule

All product-relevant parameters are supplied in the specially prepared component list.

A	B	C	D	E	F	G
Count	Family	Type	Article Number	Material Description	Max. Load	Connection Surfaces
1	GRAF Flat Tank Platin XL 10000L	Platin XL 10000L	390006	PE	30 t	4x DN110 / 4x DN160 / 4x DN200
1	GRAF Flat Tank Platin XL 15000L	Platin XL 15000L	390007	PE	30 t	4x DN110 / 4x DN160 / 4x DN200
1	GRAF Flat Tank Platin XXL 20000L	Platin XXL 20000L	391000	PE	30 t	4x DN110 / 4x DN160 / 4x DN200
1	GRAF Flat Tank Platin XXL 25000L	Platin XXL 25000L	391001	PE	30 t	4x DN110 / 4x DN160 / 4x DN200
1	GRAF Flat Tank Platin XXL 30000L	Platin XXL 30000L	391002	PE	30 t	4x DN110 / 4x DN160 / 4x DN200
1	GRAF Flat Tank Platin XXL 35000L	Platin XXL 35000L	391003	PE	30 t	4x DN110 / 4x DN160 / 4x DN200
1	GRAF Flat Tank Platin XXL 40000L	Platin XXL 40000L	391004	PE	30 t	4x DN110 / 4x DN160 / 4x DN200
1	GRAF Flat Tank Platin XXL 45000L	Platin XXL 45000L	391005	PE	30 t	4x DN110 / 4x DN160 / 4x DN200
1	GRAF Flat Tank Platin XXL 50000L	Platin XXL 50000L	391006	PE	30 t	4x DN110 / 4x DN160 / 4x DN200
1	GRAF Flat Tank Platin XXL 55000L	Platin XXL 55000L	391007	PE	30 t	4x DN110 / 4x DN160 / 4x DN200
1	GRAF Flat Tank Platin XXL 60000L	Platin XXL 60000L	391008	PE	30 t	4x DN110 / 4x DN160 / 4x DN200
1	GRAF Flat Tank Platin XXL 65000L	Platin XXL 65000L	391009	PE	30 t	4x DN110 / 4x DN160 / 4x DN200



For more information about our Stormwater Management, Rainwater Harvesting or Wastewater Treatment, ask for our technical catalogue.

Otto Graf GmbH
Kunststofferzeugnisse

Carl-Zeiss-Straße 2 – 6
DE-79331 Teningen

Tel.: +49 7641 589-0
Fax: +49 7641 589-50

mail@graf.info
www.graf-online.de