



Revit Families

MANUAL HANDLING
UNDERGROUND TANK CARAT XL-XXL
+ ACCESSORIES



GENERAL

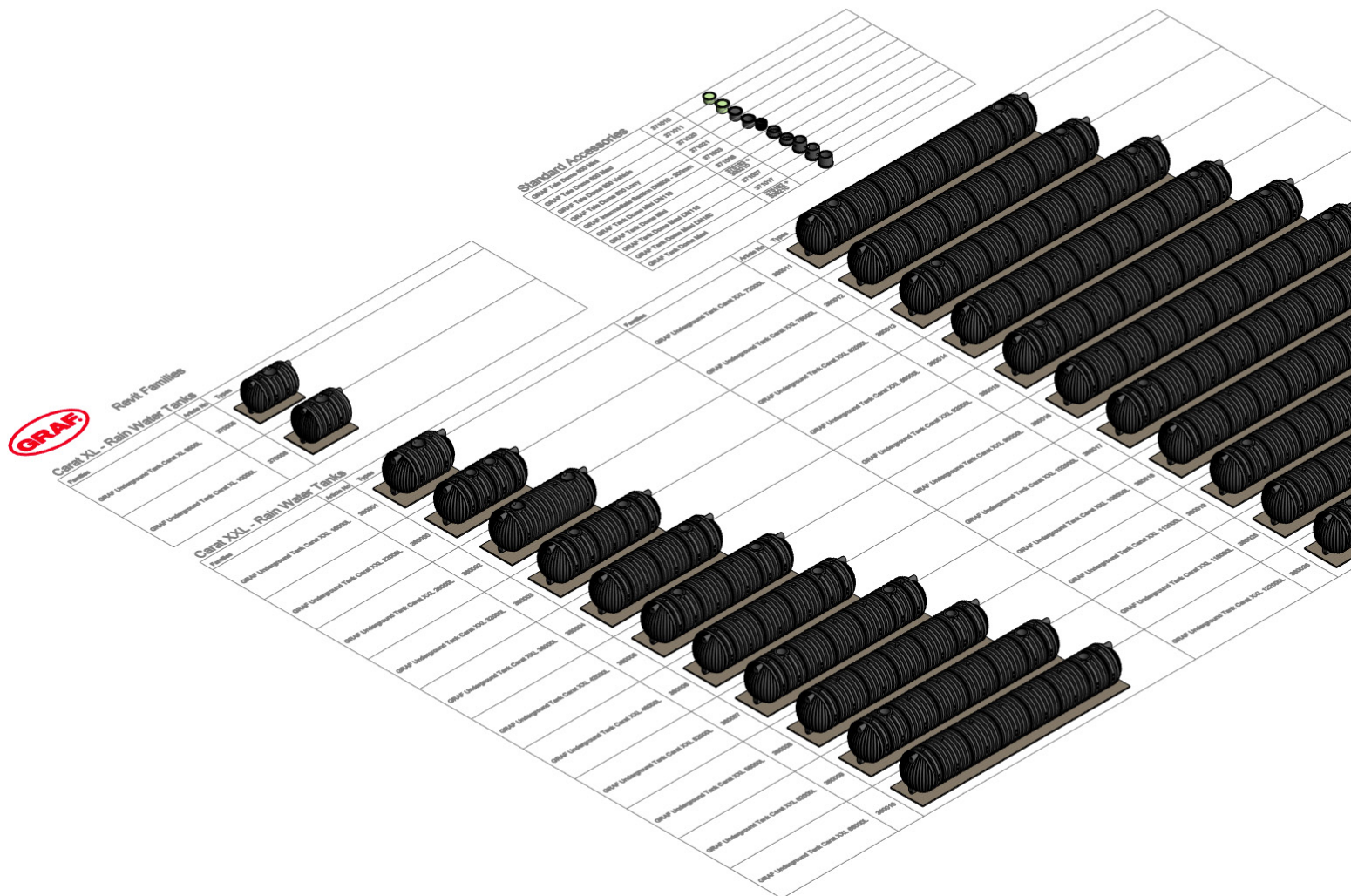
REVIT Underground Tank Carat XL – XXL + Accessories

Revit Version

The GRAF Revit Families are created in the english version of Revit 2018.

Revit Project

The Revit project **GRAF_Underground_Tank_Carat_XL-XXL_Family+_standard_Accessories.rvt** contains all tank and standard accessories families of the Carat series. The families are created on the Revit category Specialty Equipment.



How to add the families to your project

1. Open your Revit project.
2. Open the **GRAF_Underground_Tank_Carat_XL-XXL_Family+_standard_Accessories.rvt**
3. In this project, select a family.
4. In the Modify menu run Edit Family. This opens the Family Editor.
5. From here, run Load into Project (or Load into Project and Close) and select your project.
The family is available now in the project browser of your project under Families > Specialty Equipment.
The family types can be dragged into your drawing area.
6. You can close the family you have opened. You do not need to save it, as all families and types are still available in the **GRAF_Underground_Tank_Carat_XL-XXL_Family+_standard_Accessories.rvt**

*Alternatively, use Insert > Load Family to load the downloaded single families directly in your project.
In this case, you do not need to open the overview project.*

PROPERTIES

REVIT Underground Tank Carat XL – XXL + Accessories



Correct planning

For correct planning, the information in the product-specific installation instructions must be observed.

Detail Levels

The GRAF families support the Revit detail levels Coarse, Medium and Fine.



coarse



medium

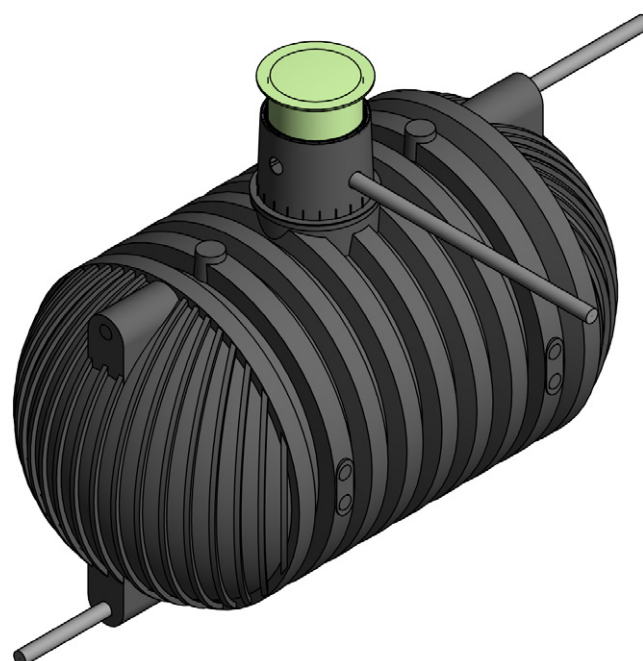
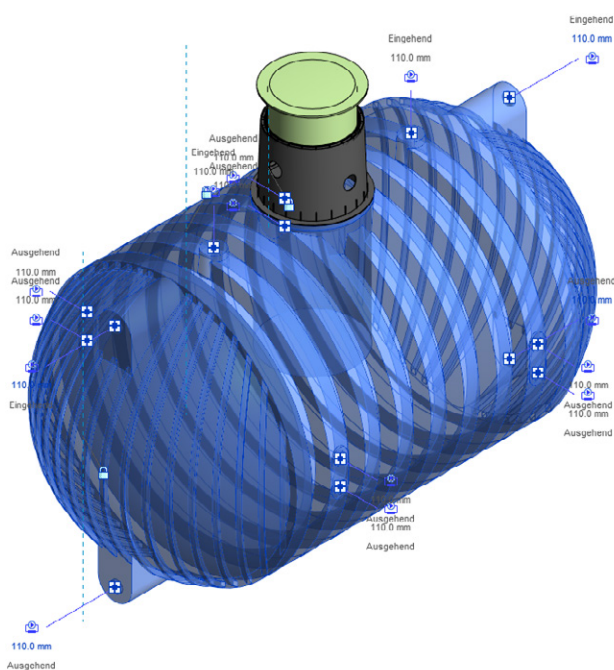


fine

Connectors

Piping systems can be designed using the connectors on the tanks and accessories.

Underground Tank Carat XL – XXL

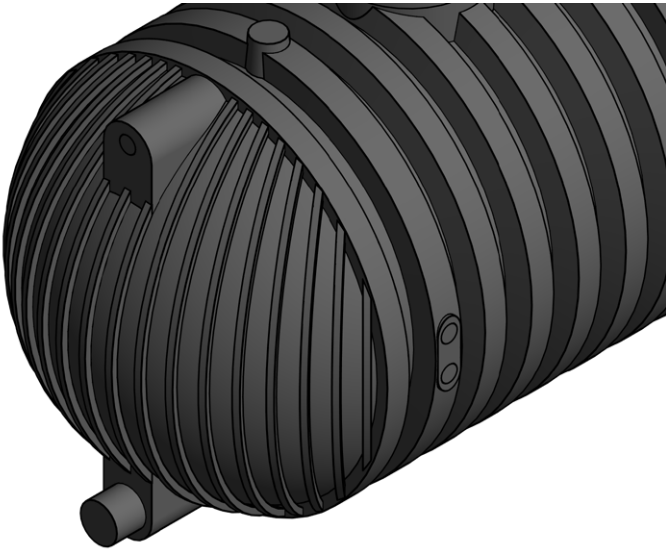


PROPERTIES

REVIT Underground Tank Carat XL – XXL + Accessories

Note the selection options for the pipe diameters under the dimension group. From a connection size of DN 250, a welded connection piece appears automatically. Please take this into account when planning.

Connection Botto...	Connection : DN250
Connection Botto...	Connection : DN110
Connection Top L...	Connection : DN160
Connection Top R...	Connection : DN200
	Connection : DN250
	Connection : DN300



Base of the families

The base points in the families are in x/y-direction the center, in z-direction on the bottom edge for the tanks, for accessories based on the usage of the families.

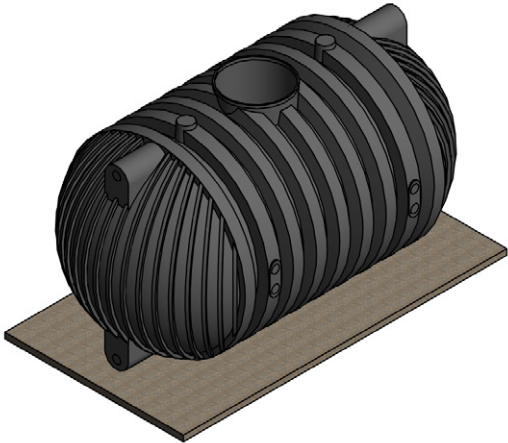


Show Gravel

Defines the visibility of the gravel layer below the tank. This is displayed with 80 mm below the base-point of the model.



Konstruktion		⬆
Show Gravel	<input type="checkbox"/>	



Konstruktion		⬆
Show Gravel	<input checked="" type="checkbox"/>	

The Type Properties contain Meta data like article number or hyperlinks to technical information. The material parameter is already set with predefined GRAF materials.

Typeneigenschaften

Familie: GRAF Underground Tank Carat XXL 16000L
Laden...

Typ: Carat XXL 16000L
Duplizieren...

Umbenennen...

Typenparameter

Parameter	Wert
Konstruktion	
Excavation Width	2700.0
Excavation Length	4730.0
Excavation Height	2935.0
Distance from Solid Constructions	1000.0
Materialien und Oberflächen	
Material	Graf_PE
Abmessungen	
Width	2500.0
Length	4530.0
Height	2550.0
HLS	
Connection DN110<Rohrformteile>	Connection : DN110
Connection DN160<Rohrformteile>	Connection : DN160
Connection DN200<Rohrformteile>	Connection : DN200
Connection DN250<Rohrformteile>	Connection : DN250
Connection DN300<Rohrformteile>	Connection : DN300
Connection Surfaces	14x DN110 / 6x DN160 / 6x DN200 (4x DN250 / 4x DN315)
ID-Daten	
Typenbild	
Bauelement	

GRAF Specialty Equipment Schedule

All product-relevant parameters are supplied in the specially prepared component list.

Count	Family	Type	Model	Article Number	Material	Max. Load	Connection Surfaces	Length
1	GRAF Intermediate Section DN600 - 300mm	Intermediate Section	Intermediate Section DN 600, effective length	371003	PE			690
1	GRAF Tank Dome Maxi	Tank Dome Maxi	Tank Dome Maxi	375182 + 330210	PP			870
1	GRAF Tank Dome Maxi DN110	Tank Dome Maxi D	Tank Dome Maxi DN110	371007	PP		5x DN110	870
1	GRAF Tank Dome Maxi DN110	Tank Dome Maxi D	Tank Dome Maxi DN110	371007	PP		5x DN110	870
1	GRAF Tank Dome Maxi DN160	Tank Dome Maxi D	Tank Dome Maxi DN160	371017	PP		5x DN160	870
1	GRAF Tank Dome Mini	Tank Dome Mini	Tank Dome Mini	375183 + 330210	PP			870



For more information about our Stormwater Management, Rainwater Harvesting or Wastewater Treatment, ask for our technical catalogue.

Otto Graf GmbH
Kunststofferzeugnisse

Carl-Zeiss-Straße 2 – 6
DE-79331 Teningen

Tel.: +49 7641 589-0
Fax: +49 7641 589-50

mail@graf.info
www.graf-online.de